

# 9. Transport in animals

## 9.4 Blood

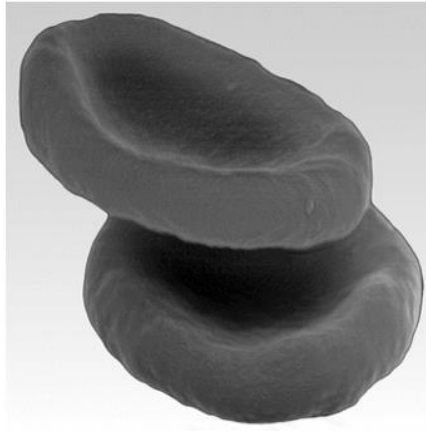
### Paper 1 and 2

#### Question Paper

## **Paper 1**

Questions are applicable for both core and extended candidates

- 1 The photomicrograph shows two blood cells.

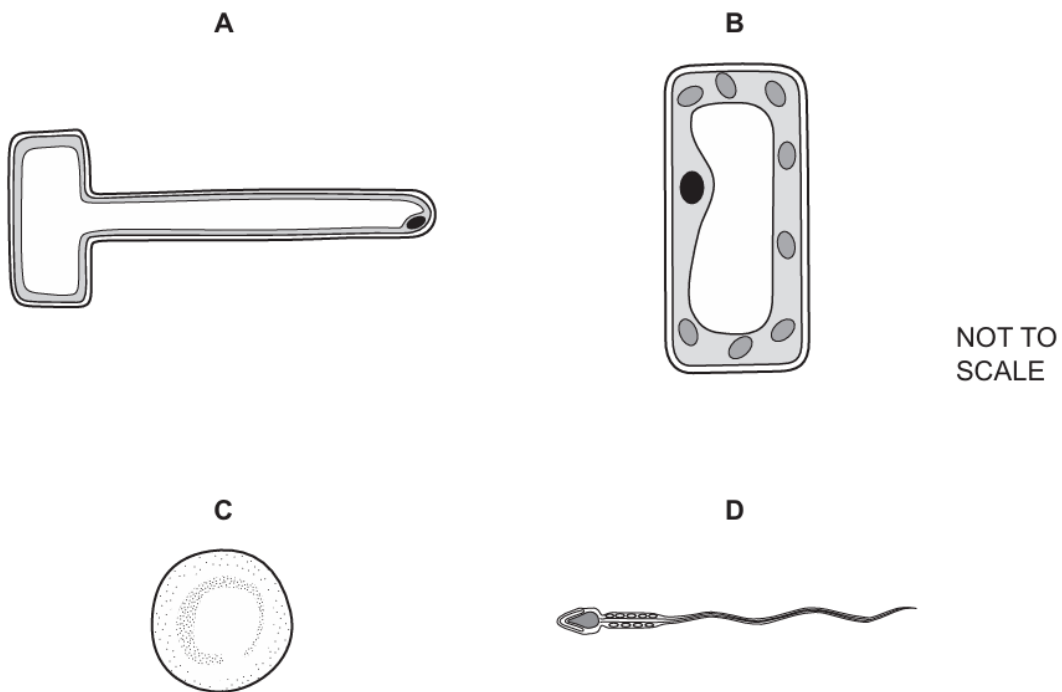


What is the function of these cells?

- A** to carry out phagocytosis
- B** to produce antibodies
- C** to transport oxygen
- D** to transport vitamins

- 2 The diagrams show four different types of cells.

Which cell contains haemoglobin?



- 3 In which row is the component of blood correctly linked to its function?

	blood component	function
<b>A</b>	plasma	transport of carbon dioxide
<b>B</b>	platelets	phagocytosis
<b>C</b>	red blood cells	antibody production
<b>D</b>	white blood cells	blood clotting

- 4 Which process is slower than normal in a person with very few platelets?

- A** antibody formation
- B** blood clotting
- C** oxygen transport
- D** phagocytosis

5 Which process is slower than normal in a person with very few platelets?

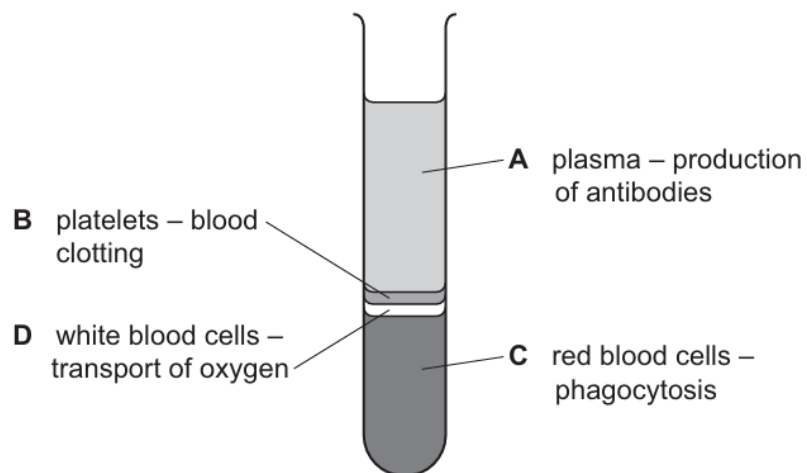
- A antibody formation
- B blood clotting
- C oxygen transport
- D phagocytosis

6 Which component of blood produces antibodies?

- A red blood cells
- B white blood cells
- C platelets
- D plasma

7 The diagram shows the four components of blood separated into layers.

Which component is labelled with the correct function?

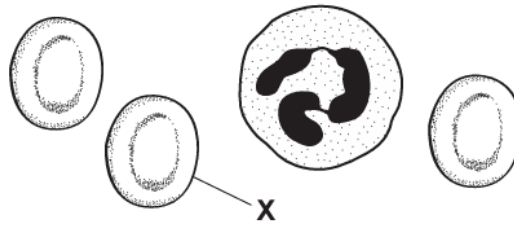


- 8 What is a function of some white blood cells?
- A** to carry glucose
  - B** to carry oxygen
  - C** to produce antibiotics
  - D** to produce antibodies
- 9 Which component of the blood releases antibodies in response to an infection by bacteria?
- A** blood plasma
  - B** platelets
  - C** red blood cells
  - D** white blood cells
- 10 Some functions of blood are listed.
- 1 antibody production
  - 2 blood clotting
  - 3 oxygen transport
  - 4 phagocytosis

What are functions of white blood cells?

- A** 1 and 2      **B** 1 and 4      **C** 2 and 3      **D** 3 and 4

- 11 The diagram shows human blood cells, as seen under a microscope.



What is the function of cell **X**?

- A** to carry glucose
- B** to carry oxygen
- C** to defend against disease
- D** to make the blood clot

## **Paper 2**

Questions are applicable for extended candidates only

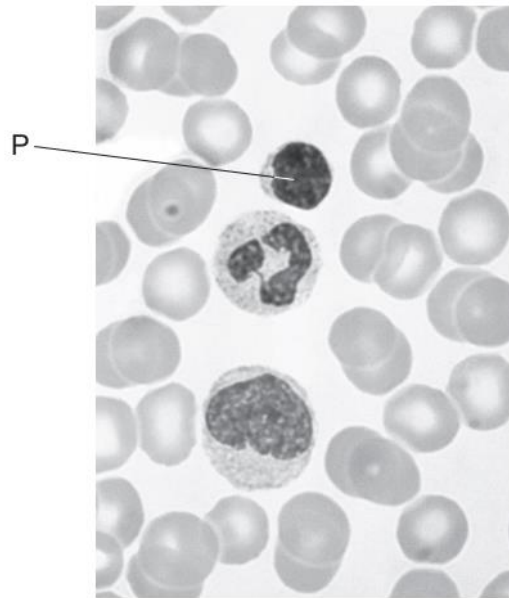
- 12 The diagram shows a component of blood.



What is the name of this component? **(extended only)**

- A** lymphocyte
  - B** phagocyte
  - C** platelet
  - D** red blood cell
- 13 What is the role of lymphocytes in the blood? **(extended only)**
- A** antibody production
  - B** blood clotting
  - C** phagocytosis
  - D** oxygen transport

- 14 The photomicrograph shows some blood cells.



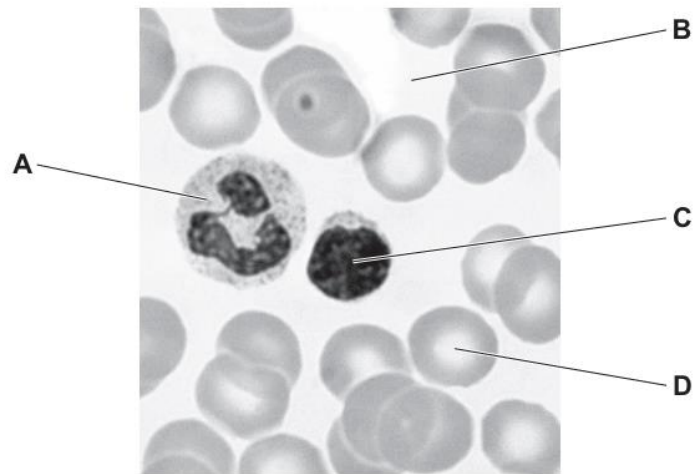
What is the function of cell P? (extended only)

- A It carries carbon dioxide.
  - B It carries oxygen.
  - C It helps to clot blood.
  - D It produces antibodies.
- 15 Which component of blood produces antibodies? (extended only)
- A lymphocytes
  - B phagocytes
  - C plasma
  - D red blood cells



16 The photomicrograph shows human blood.

Which blood component makes antibodies? **(extended only)**



17 The diagrams show four components of blood.

Which component produces antibodies? **(extended only)**

